

YAVAPAI COLLEGE FACILITIES MANAGEMENT NEWS

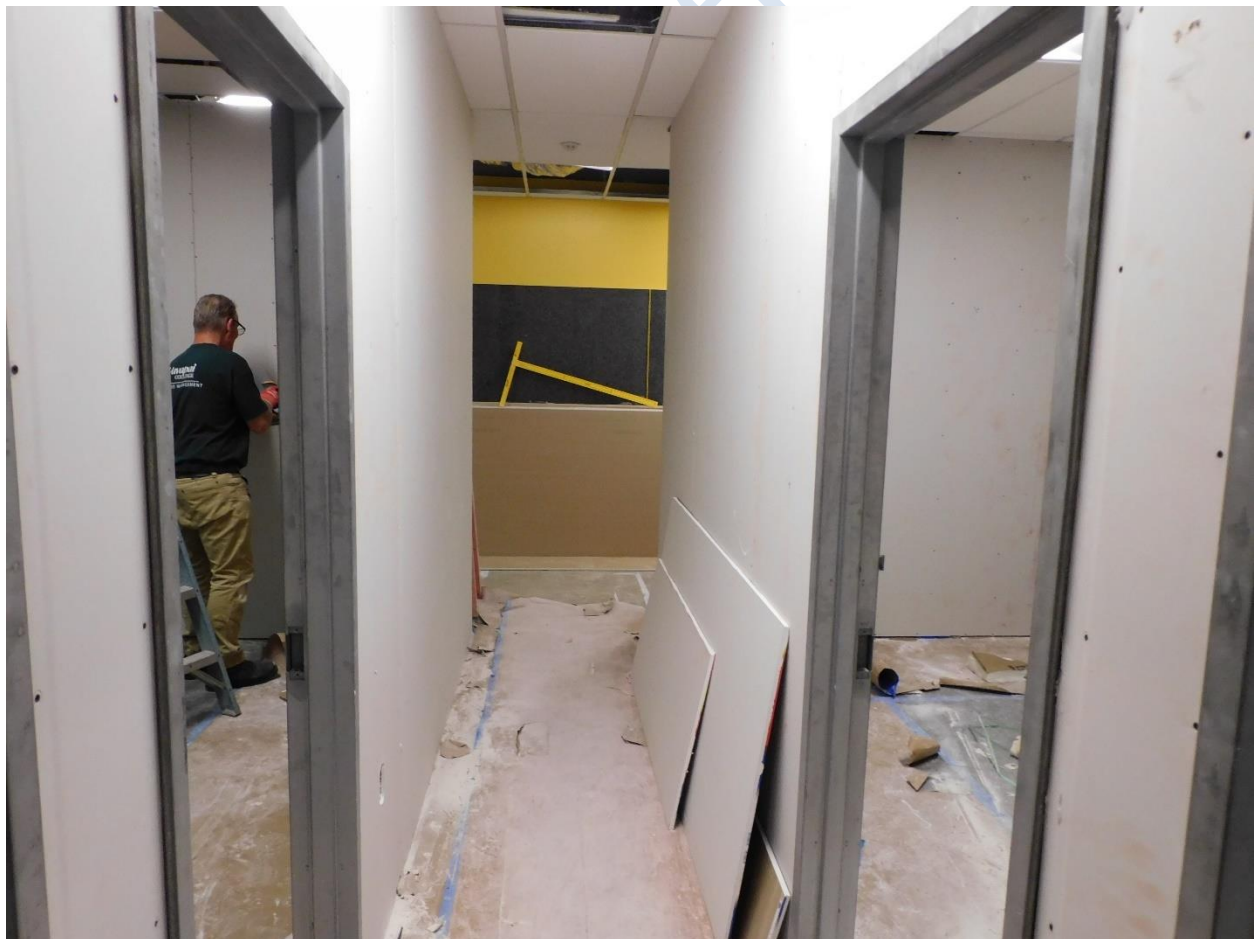
March 2023

The March issue of this newsletter contains the latest information related to Facilities Management programs and projects, along with general information concerning the development of the FY24 facilities master plan and capital improvements. If you have questions about any of the items listed, please email me at david.laurence@yc.edu. This newsletter is also posted on the Facilities website.

Campus/Center Projects

CTEC Student Lounge Remodel

Drywall is being installed along with door and window frames. This space is being remodeled to include much-needed offices, ADA, and tutoring space.



Technician III Carpenter - VV Kenneth Hanson installing drywall for CTEC offices

FY22-23 CAPITAL IMPROVEMENT PLAN

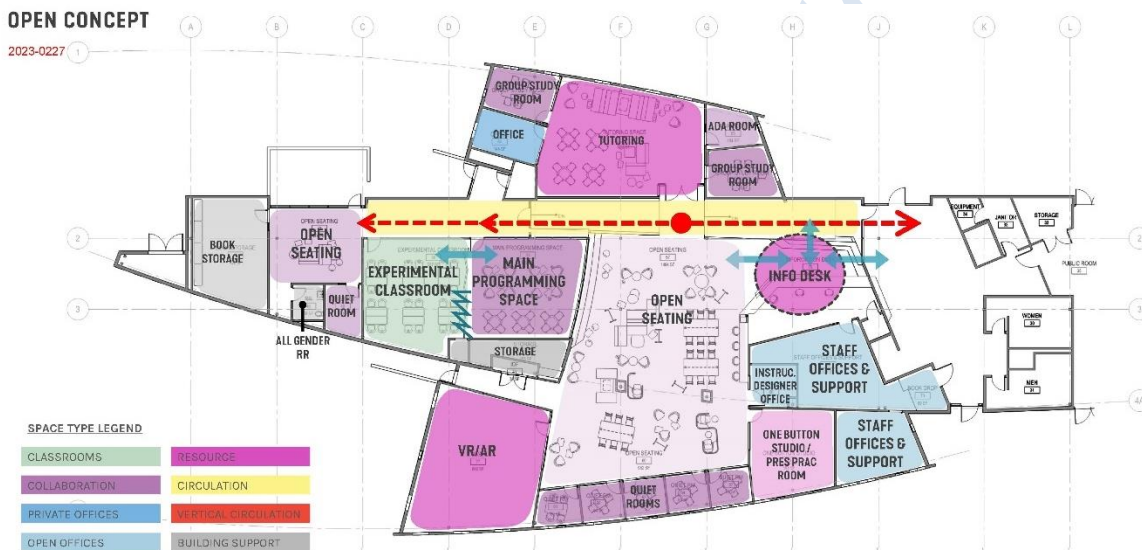
Center for Innovation and Learning – Verde Valley Campus

The project is in the design development stage based on the “Open Concept” illustrated below. The goal is to begin demolition of the existing library/learning commons space in mid-May.

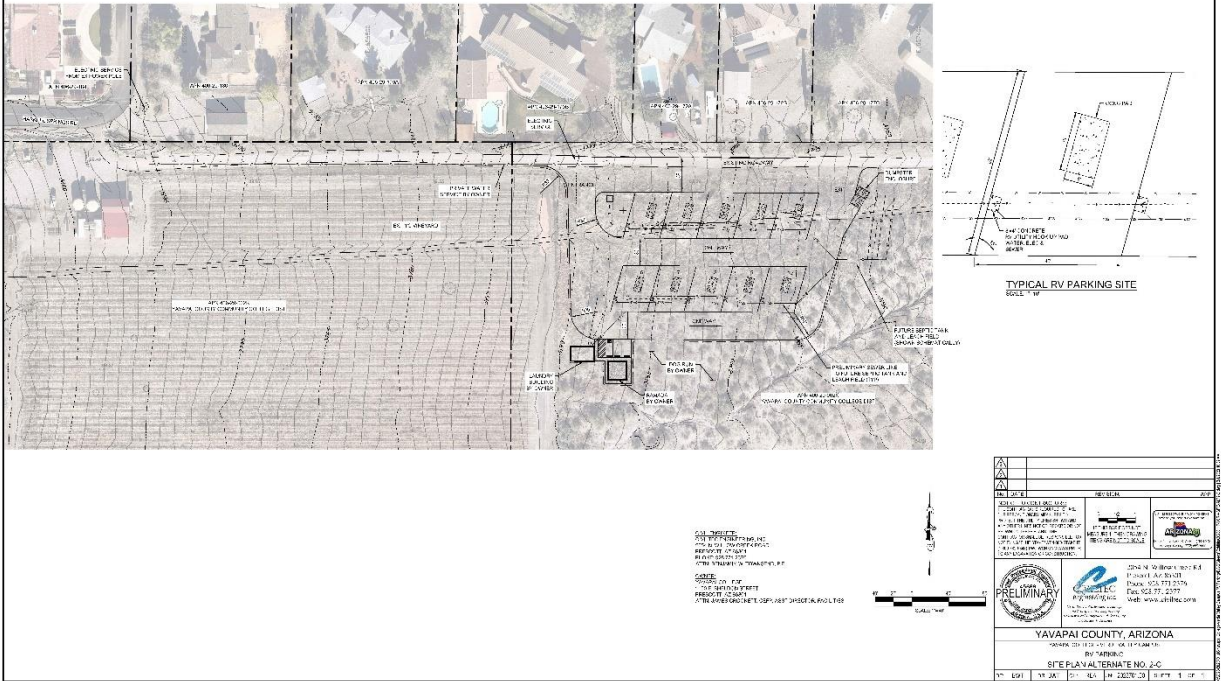
Library operations will be moved to I-138 at the conclusion of the spring semester and will remain until the renovation of building M is complete.

The Learning Commons will also be moved at the end of the spring semester and will be located in G-108 and G-112 for the duration of construction.

Building 3 Rider Diner Improvements – phase 1- space refresh in process
Verde Valley Campus Employee Housing – Phase 1 RV Park under construction



YAVAPAI COLLEGE - VERDE VALLEY CAMPUS
 TOWN OF CLARKDALE, YAVAPAI COUNTY, ARIZONA
 RV PARKING SITE PLAN
 ALTERNATE NO. 2-C



Verde Valley Campus employee housing RV park



RV park construction activity east of upper vineyard

FY23-24 CAPITAL IMPROVEMENT PLAN

Center for Learning and Innovation - Prescott Campus

Project visioning will begin in May. Stay tuned for more information regarding visioning workshops for faculty, staff, and students.

BUILDINGS AND GROUNDS PLANNED MAINTENANCE PROJECTS

As part of the budget, planned maintenance projects are scheduled each year to ensure that College facilities are maintained at a level to support optimum performance in building systems and infrastructure, life safety compliance, adequate maintenance and repair of roadways, parking lots, along with College grounds. These projects result from a recent Facilities Condition Assessment (FCA), which identifies when repairs, modifications, or replacement of components should occur.

FCA Projects:

Buildings 2, 3, and 4 LED Lighting Upgrade – in process through May 2023

CTEC HVAC and Skylight Replacement – in process

Chino Valley Agribusiness Center greenhouse infrastructure replacement and upgrades – in process



HVAC units awaiting install at CTEC

Energy Corner – Tim Hunt

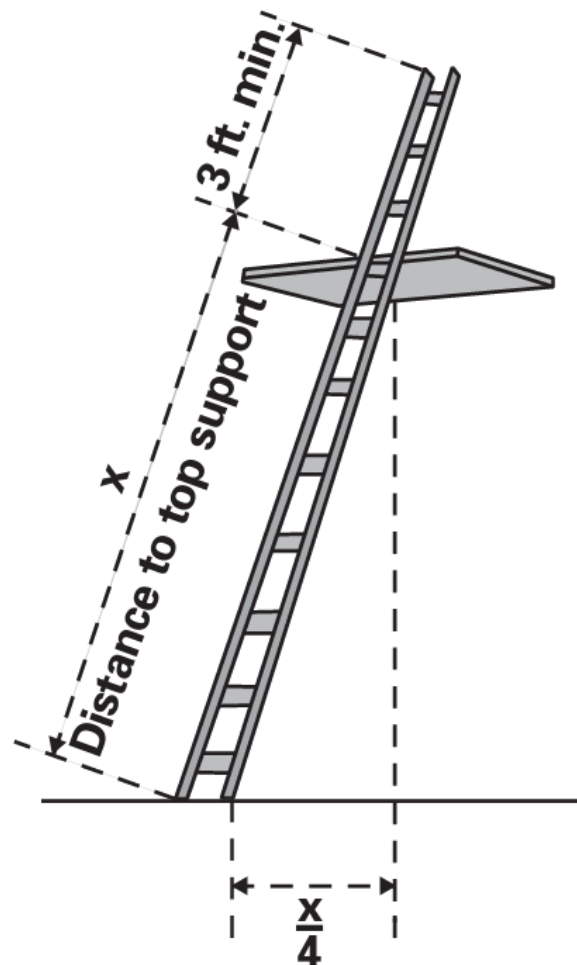
As the weather transitions from cooler to warmer temperatures, many of our rooms will utilize heating in the mornings and cooling in the afternoons. Our goal is to keep your space at a comfortable and stable temperature. Contact facilities if your area is uncomfortable and needs adjustment. Please continue to schedule in 25-Live so that we may accurately control room temperatures and keep all spaces comfortable.

Environmental, Health, and Safety – David Teague

March is National Ladder Safety Month

Falls from portable ladders (step, straight, combination, and extension) are one of the leading causes of occupational fatalities and injuries. Here are some tips to help keep you safe both at work and at home when you use a ladder:

- Avoid electrical hazards! – Look for overhead power lines and avoid using a metal ladder near power lines or exposed energized electrical equipment.
- Maintain 3 points of contact (two hands and a foot or two feet and a hand) on the ladder when climbing. Keep your body near the middle of the ladder and face the ladder while climbing.
- Keep slippery material off the rungs, steps, and feet.
- Do not use a ladder's top step/rung as a step/rung unless it was designed for that purpose.
- Do not place a ladder on boxes or other unstable bases to obtain additional height.
- Do not move or shift a ladder while a person or equipment is on the ladder.
- Extension and straight ladders must extend at least three feet above the point of support. The proper angle for setting up a ladder is to place the base a quarter of the ladder's working length from the wall or vertical surface (see diagram).

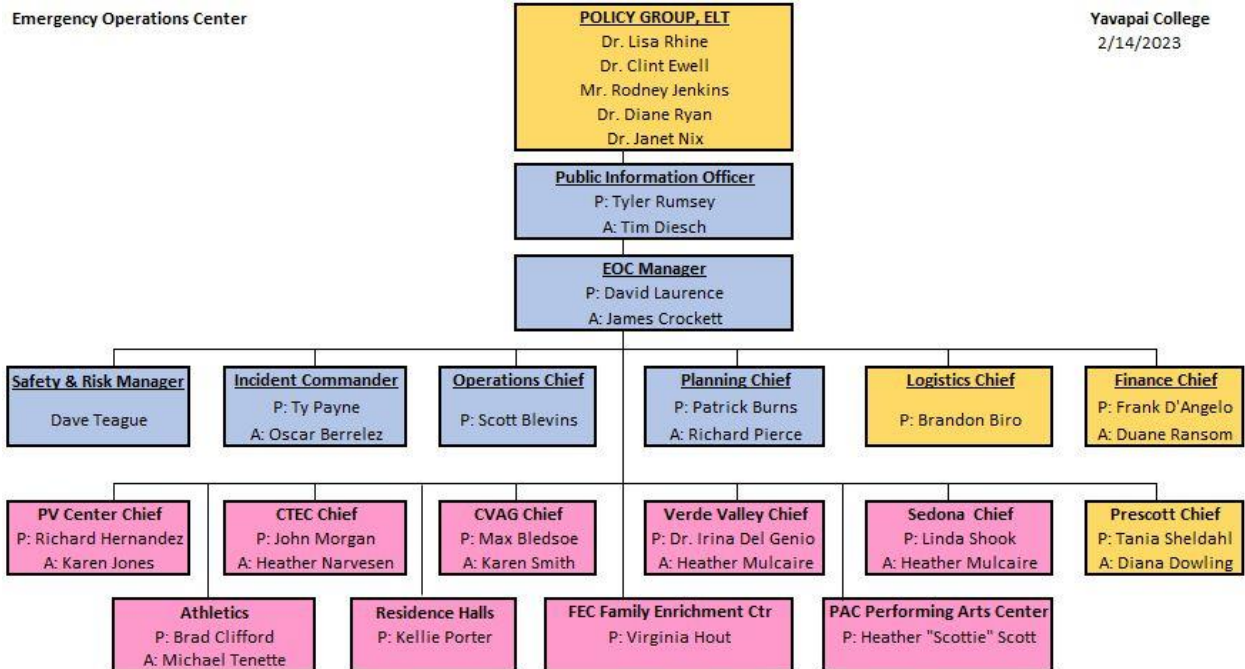


For additional information, or if you have any questions, contact the EHS Manager at David.teague@yc.edu or (928) 717-7958.

Emergency Preparedness

The Emergency Operations Center (EOC) is activated when an emergency arises that may impact any of the College's centers or campuses. For information about emergency communications, please contact any Core EOC team member listed below.

Recently, the EOC was activated many times to determine the impact of inclement weather and its effects on college operations. Since January 17, the College has experienced seven late starts, one early release, and three full closures. Bring on springtime!



For more information regarding emergency preparedness, please visit the Risk Management page of the Facilities website at: <https://www.yc.edu/v6/facilities/risk.html>.

Facilities New Team Members

No new team members this month. Facilities is looking to fill an open Technician I, Grounds position.

Well, that is all for this edition of Yavapai College Facilities Management News. Please stay tuned for the next edition containing the latest information related to projects and programs around the College.