



**GRAY**  
DECISION INTELLIGENCE

## **District Governing Board Meeting**

Overview of Program Evaluation System (PES) Software and Services

*Yavapai*  
COLLEGE

Nov 6, 2024

**Gray DI will provide the data and systems to support Yavapai College as it pursues the following goals:**

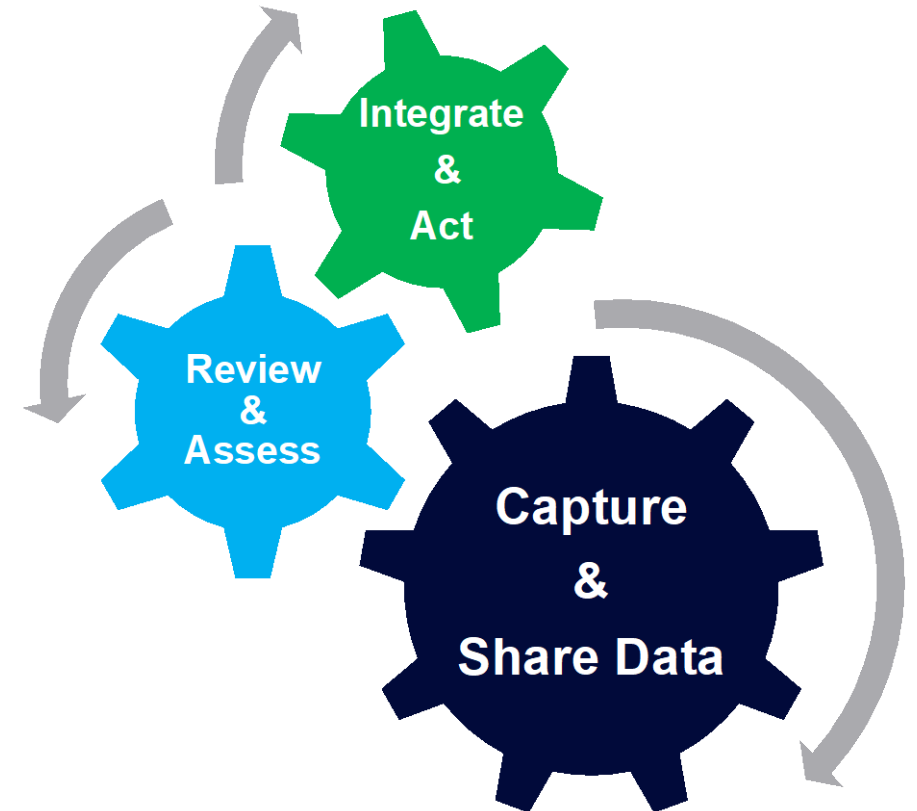
- **Data-informed decision-making**
  - Encourage a data-informed approach for program review, resource allocation, and overall strategic planning.
- **Program optimization and growth**
  - Optimize existing programs and strategically develop new ones to ensure future growth in enrollment.
- **Strategic resource allocation**
  - Take a strategic approach to resource allocation that augments emphasis on enrollments with considerations of financial health, market data, and growth potential.



## Program portfolio management is an on-going process.

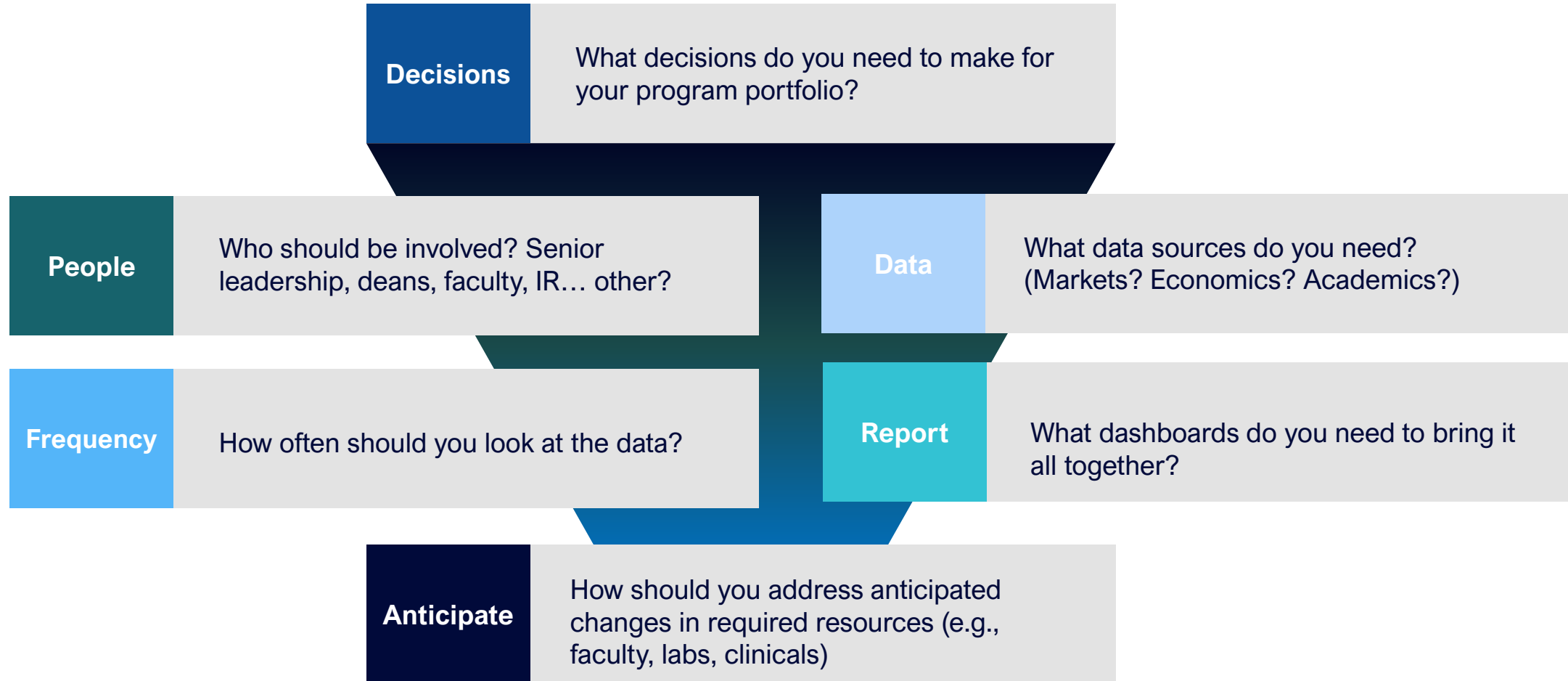
It provides a complete view of each program and the vitality of the program portfolio.

- **Capture and share program-related data** from key areas:
  - Academics
  - Administration
  - Operations
  - Market
- **Review and assess** the data on a regular basis
- **Integrate and act** to sustain a vibrant portfolio



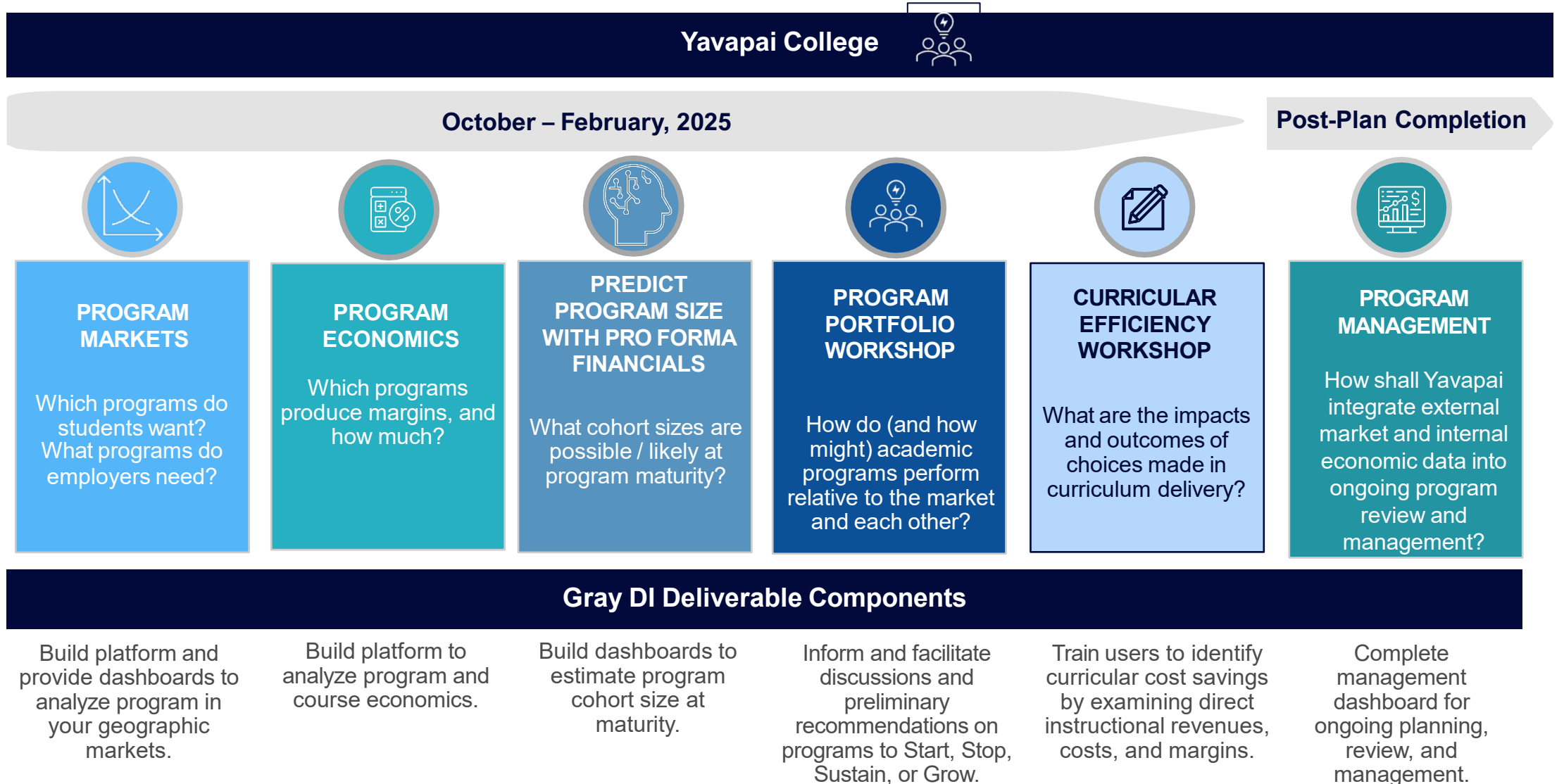


# What goes into a program management process?





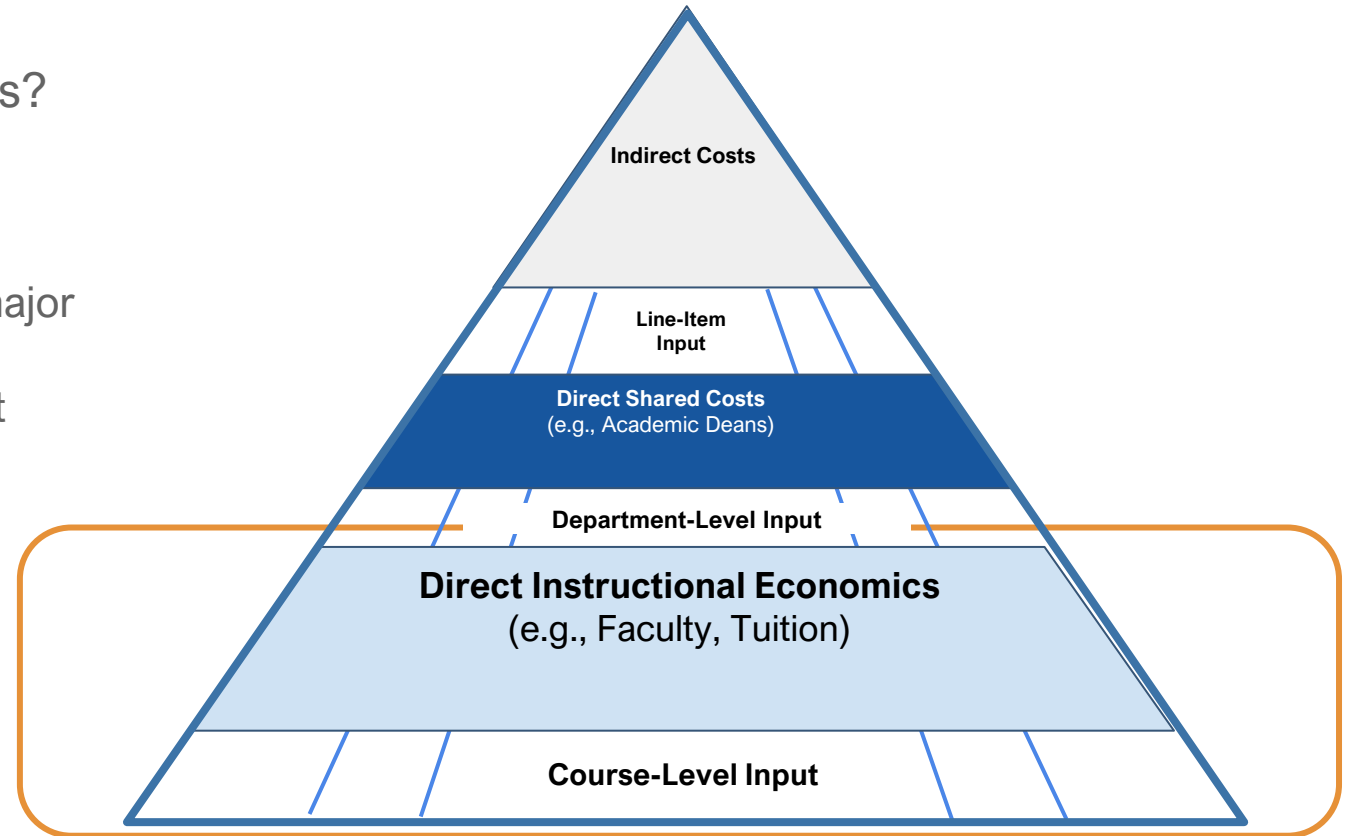
# Components, Deliverables, and Timeline



**Program economics captures all the revenues, costs, and margins that are likely to change if you decide to grow or stop a program.**

What are academic program economics?

- Revenue minus direct instructional costs
- For all courses taken by students in the major
- Including courses outside the department



## Direct Instructional Economics data can be used for two broad purposes.

### Program Economics

How does each academic program affect the financial health of the College?



### Curricular Efficiency

Data uses and application:

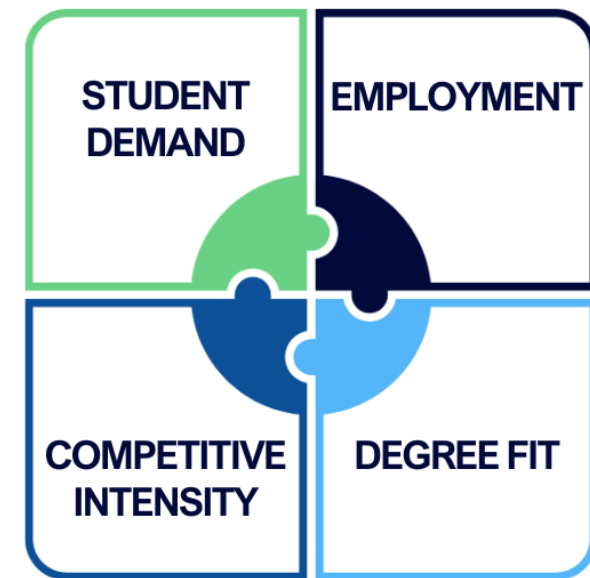




**Market understanding is a key component of an integrated program portfolio evaluation.**

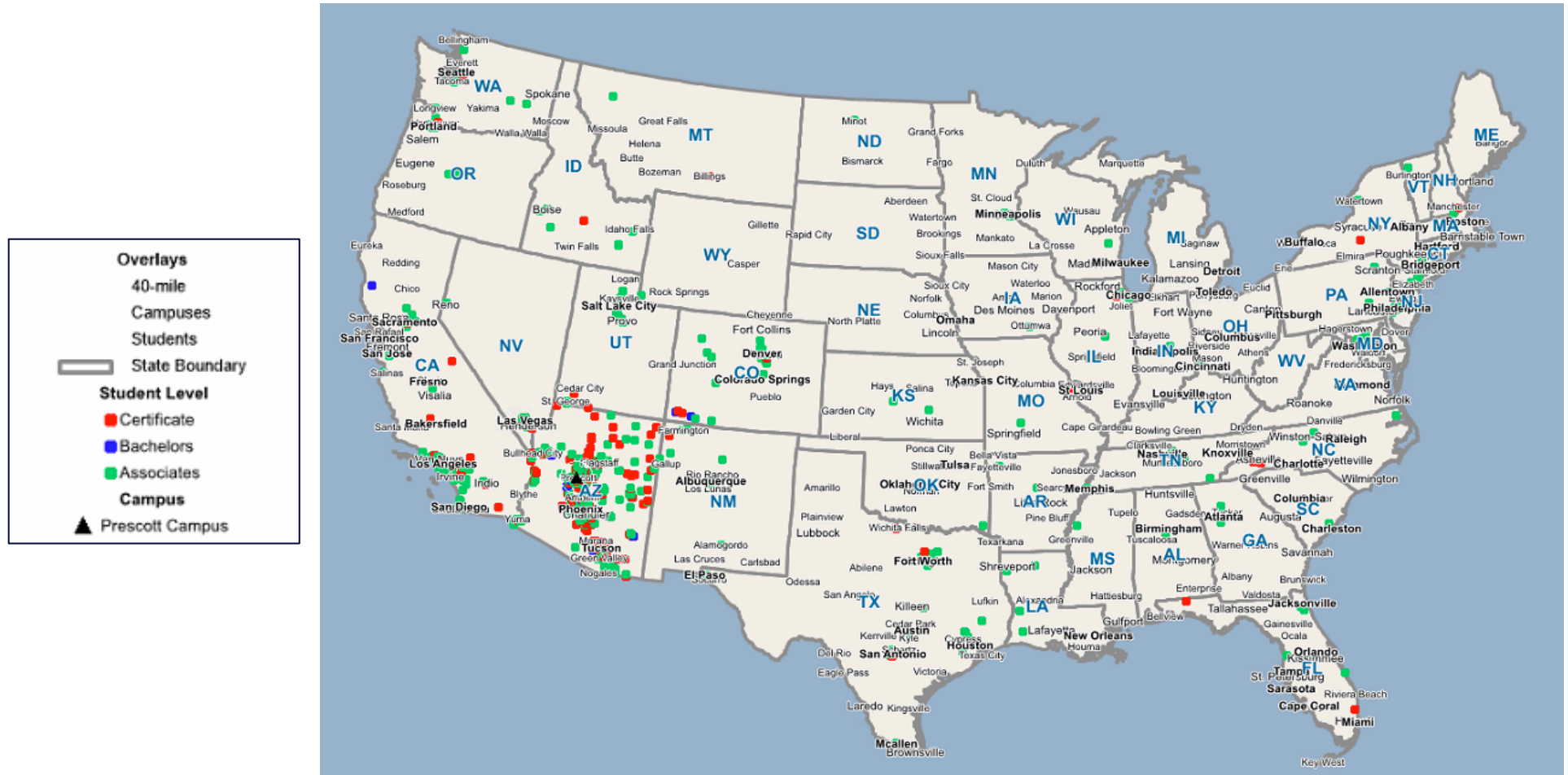
Geographic market definitions are the cornerstone of the PES Markets system, bringing together student demand, employer needs, and competition for programs.

- We will build several market definitions that represent the current student body.
- PES Markets scores 50+ metrics in four broad categories.
- The market data can be used to help identify opportunities for new academic programs.
- It can also be used to understand market demand for current programs and to focus on specific goals for the portfolio, such as growth.



# Distance Analysis: Yavapai College

We began the analysis by geocoding home addresses for Yavapai's newly enrolled students.



A total of 7,276 records for first-time enrolled students in the last two academic years were provided. 5,157 student data records were used in the distance analysis; 2,119 records were removed because they were international students or had an incomplete address or duplicated record.

# Summary: Distribution of Students by State

94% of all the students come from Arizona.

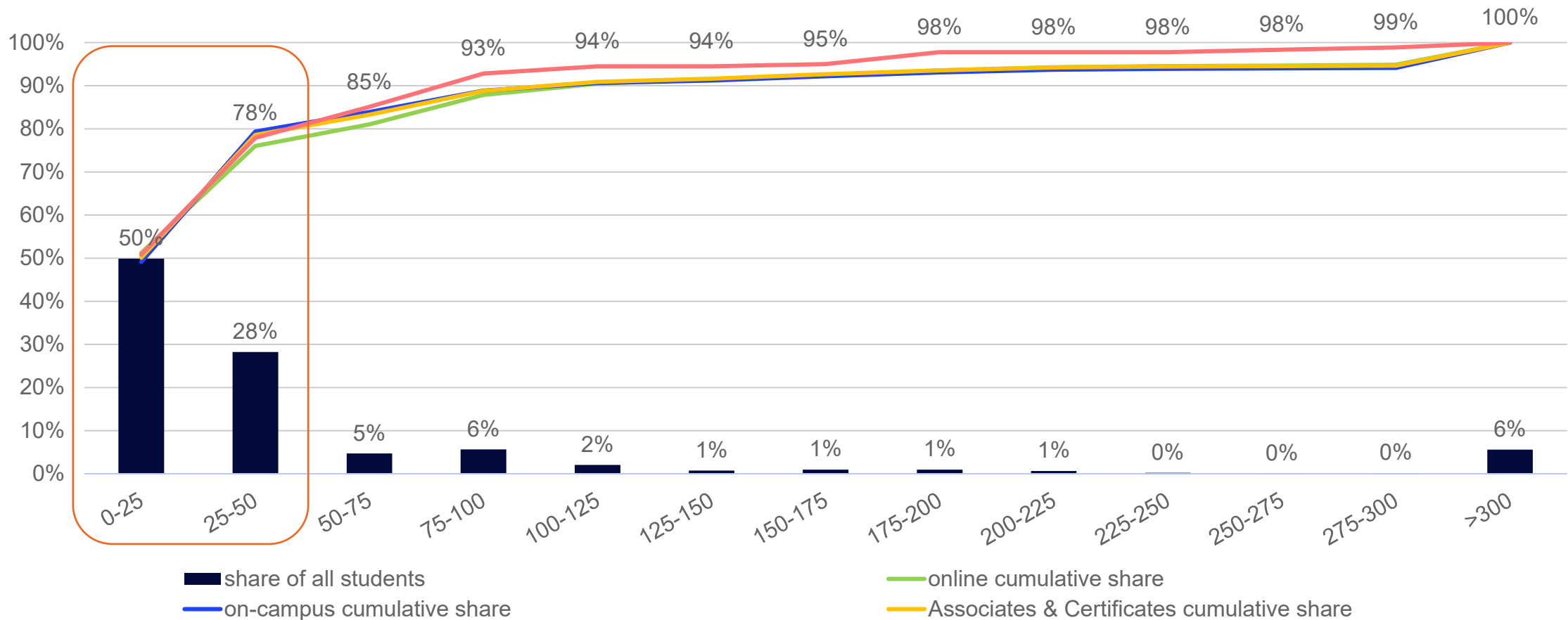
State	Students	Share of All
Arizona	4,855	94%
California	60	1%
All Other States	242	5%
<b>Grand Total</b>	<b>5,157</b>	<b>100%</b>

A total of 7,276 records for first-time enrolled students in the last two academic years were provided. 5,157 student data records were used in the distance analysis; 2,119 records were removed because they were international students or had an incomplete address or duplicated record.

# Distribution of Students by Award Level & Modality Verde Valley Campus Radius

Combined, 78% of all students originate within 50 miles of Verde Valley Campus.

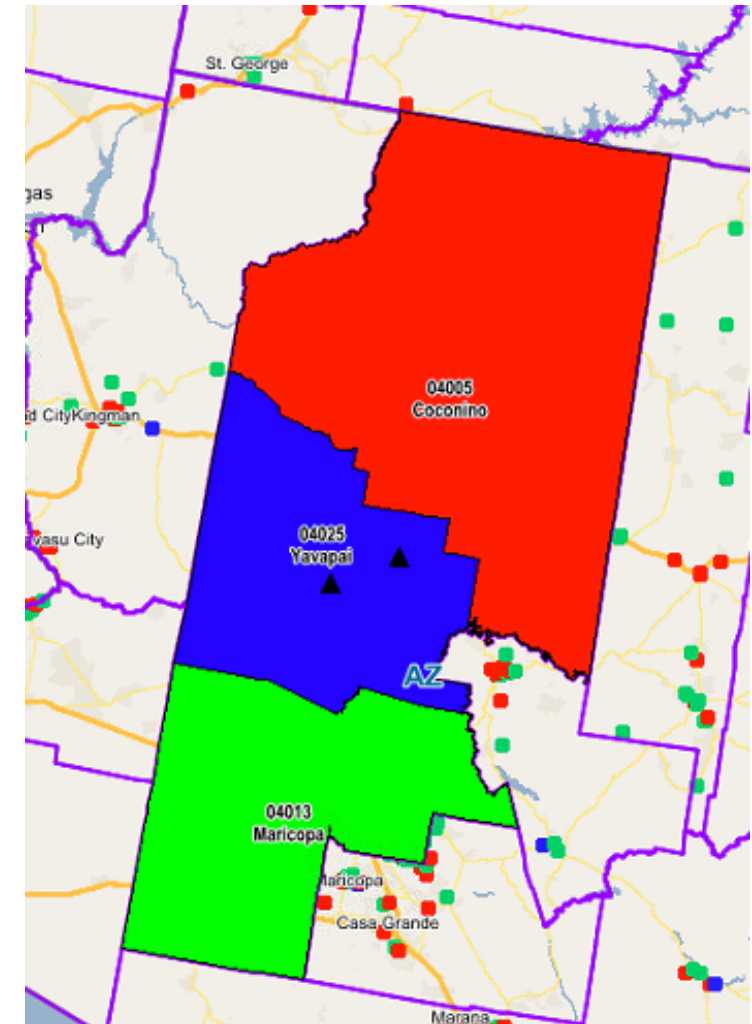
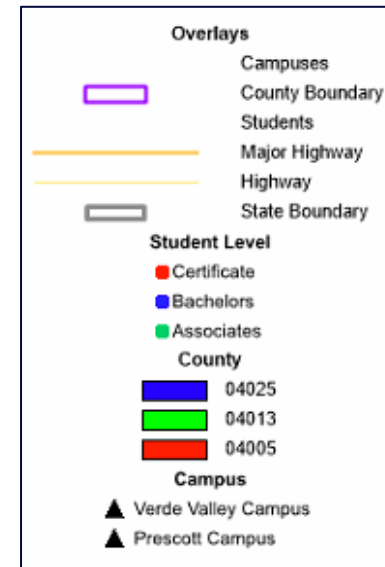
### Share of Domestic Students by Distance to Campus



# Distribution of Students by County

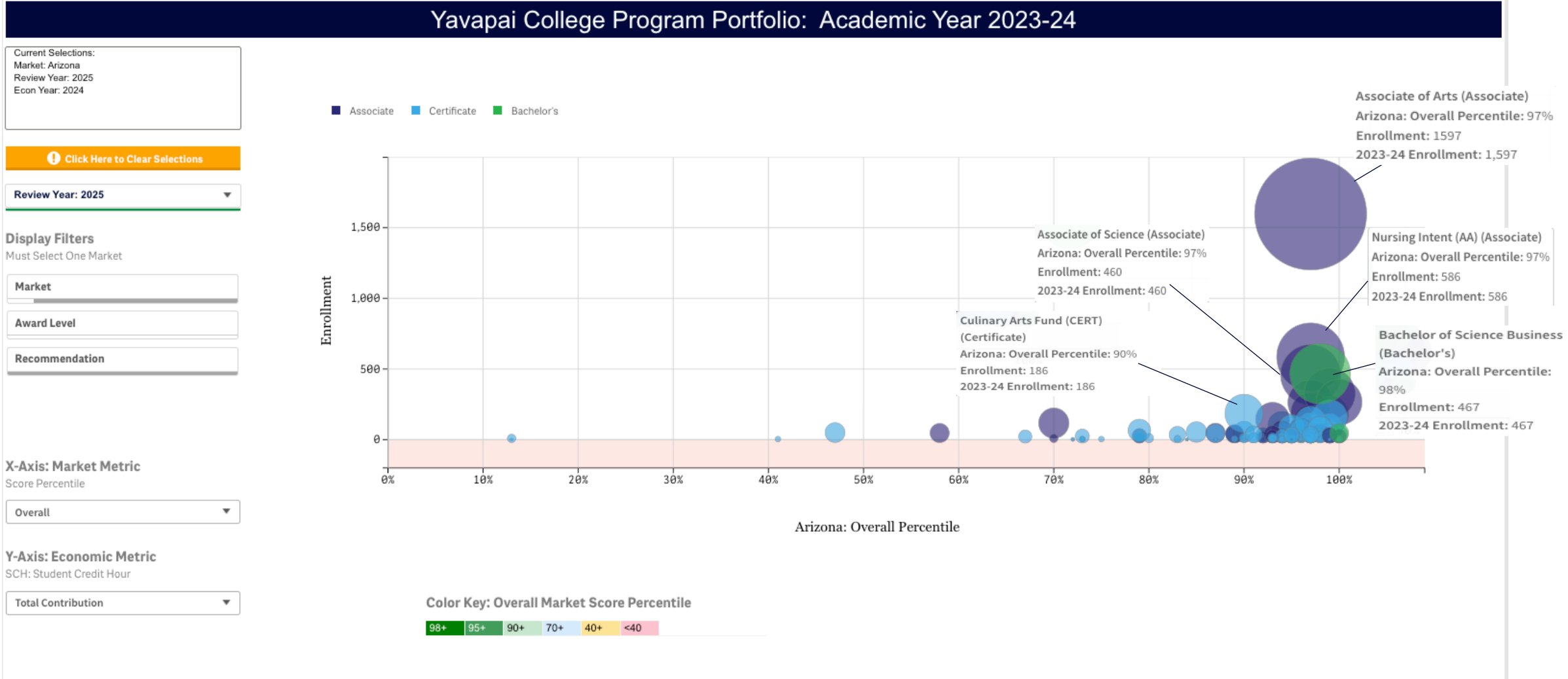
89% of all students come from the following three counties.

County	Students	Share of All
Yavapai, AZ	4,035	78%
Maricopa, AZ	392	8%
Coconino, AZ	171	3%
Grand Total	4,598	89%



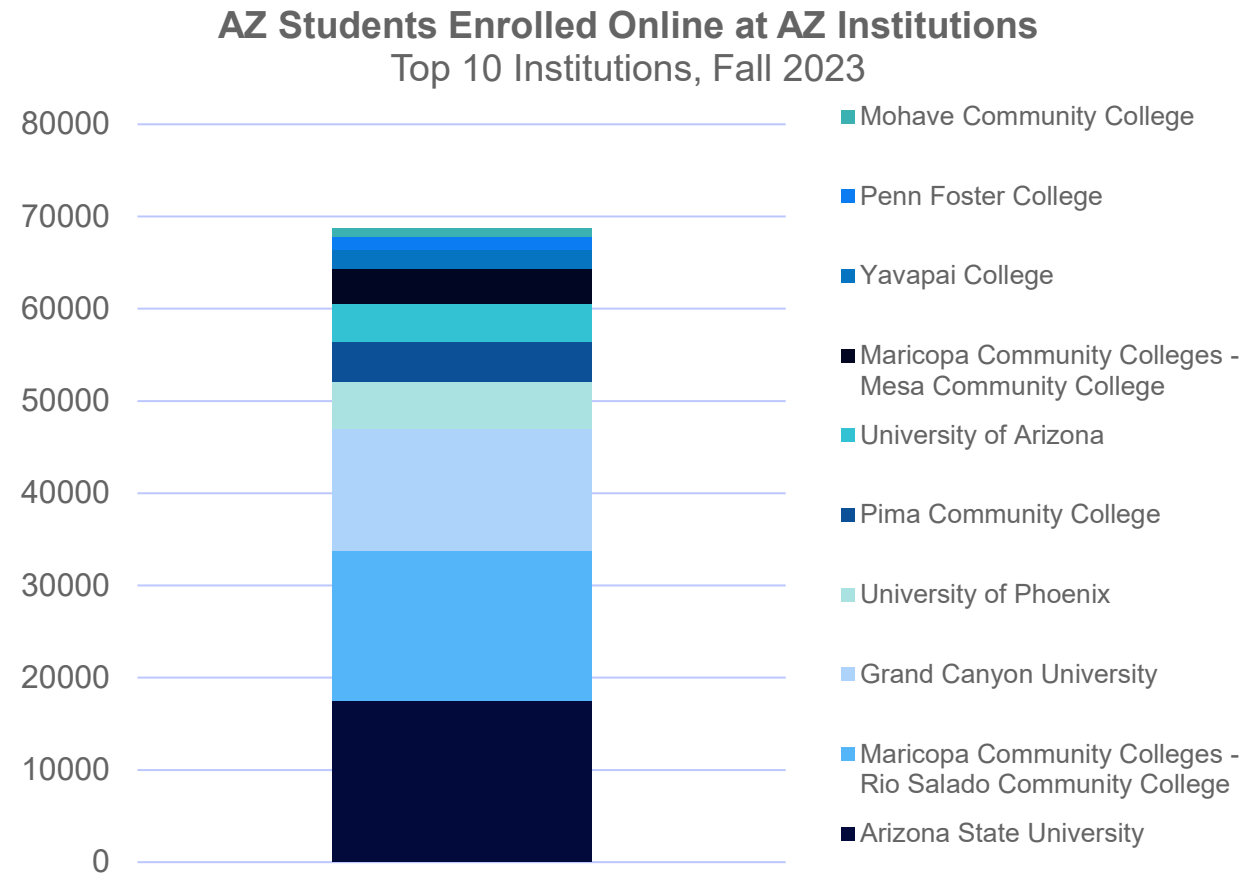
A total of 7,276 records for first-time enrolled students in the last two academic years were provided. 5,157 student data records were used in the distance analysis; 2,119 records were removed because they were international students or had an incomplete address or duplicated record.

Overall, the current program portfolio is well positioned .



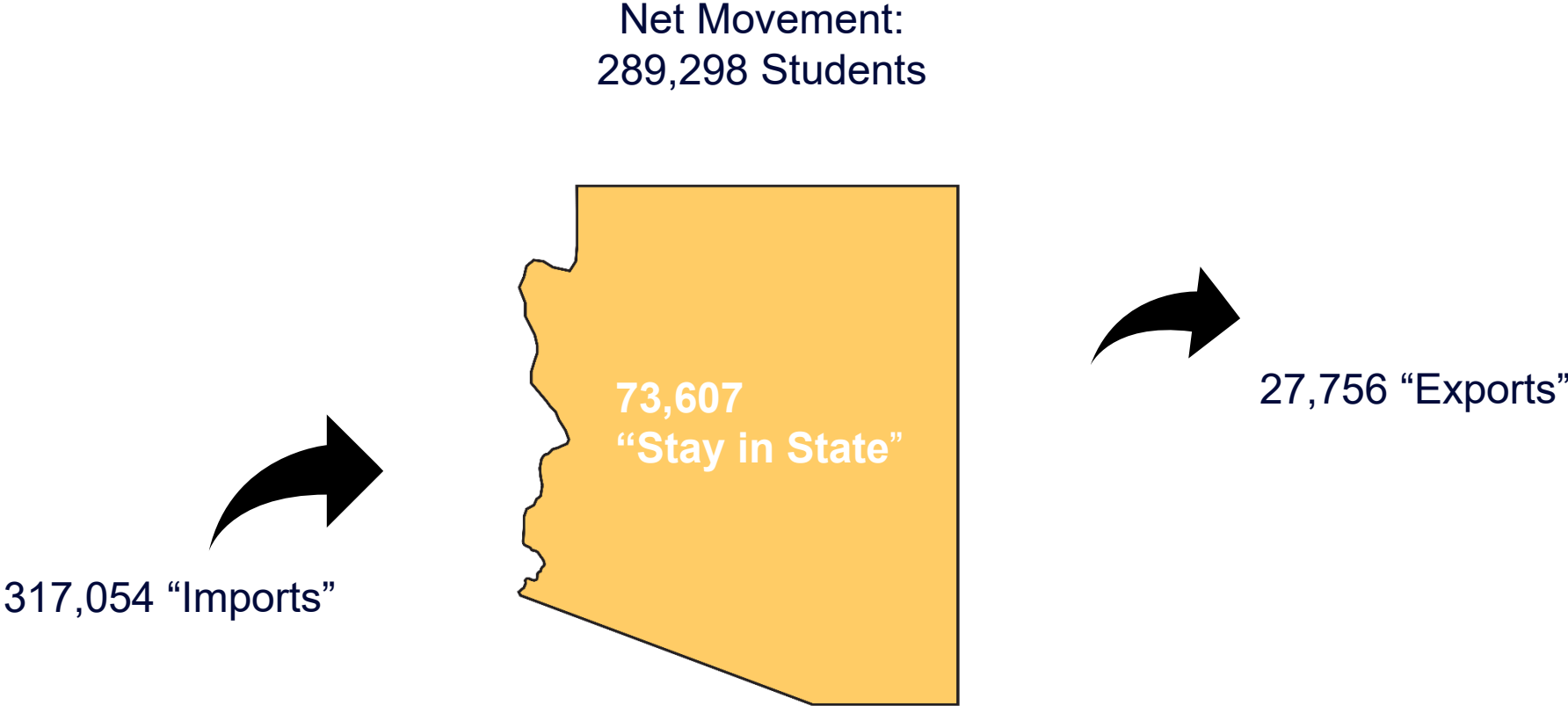
## 101,363 Arizona students enrolled in online education in Fall 2023.

- Of these, 73,607 students living in Arizona enrolled at 39 Arizona institutions



# Online Net Exports and Potential Opportunity: Arizona 2023

## Summary View





**With the completion of program economics, you will be able to strategically view your portfolio from both a market and margin viewpoint.**

- Mission-critical programs in healthy markets are candidates to grow or sustain.
- Low-margin discretionary programs in weak markets are candidates to stop.
- High-margin discretionary programs in healthy markets are tempting to grow...
  - They help fund the mission.

**Illustrative Program Portfolio:**  
Academic Year 2023-24

Total Contribution

