



# Pre-Nursing Workshop

Self-Paced Information Session

AAS and LPN-RN Advance Placement  
Nursing Programs

WELCOME!

*Nursing is a profession that embodies compassion, empathy, dedication, and determination. Each of you will find the program transformative in unique ways. Embrace the challenges, celebrate the victories, and support each other as you grow into exceptional nurses. Our faculty and staff are here to support you in every step of your academic and professional growth. They bring a wealth of knowledge and experience to guide you through your studies and clinical. Take full advantage of the resources available to you, ask questions, and engage actively in the learning process.*



*Best regards,  
Barbara Durham*  
Director of Nursing  
[Barbara.Durham@yc.edu](mailto:Barbara.Durham@yc.edu)

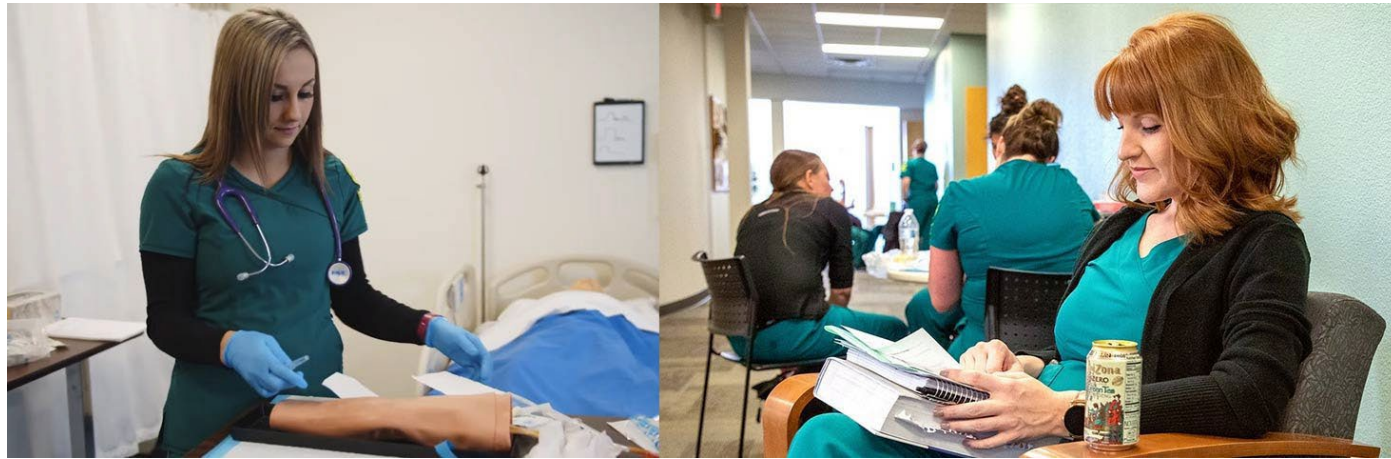
WELCOME!

## PROGRAM CONTACT INFORMATION:

Nursing Program Office, Prescott Campus | 928-776-2017  
Nursing Program Office, Verde Campus | 928-634-6512  
Email: [nursing@yc.edu](mailto:nursing@yc.edu)  
Website: [www.yc.edu/nursing](http://www.yc.edu/nursing)

## ACADEMIC ADVISING APPOINTMENTS:

Prescott Campus | 928-776-2106  
Verde Campus | 928-634-6510



# WORKSHOP OBJECTIVES

## This workshop will cover:

1. The Nursing Program (Mission, Locations, Accreditation)
2. Employment Outlook
3. Estimated Costs and Financial Aid
4. Types of Nursing Programs offered at YC
5. Requirements Before Applying
6. Applying to the Nursing Program
7. Selection Criteria Points System
8. Number of Available Placements per Location
9. Conditional Acceptance
10. Nursing Student Handbook



# WHAT IS NURSING?

**Definition of Nursing:** *Nursing integrates the art and science of caring and focuses on the protection, promotion, and optimization of health and human functioning; prevention of illness and injury; facilitation of healing; and alleviation of suffering through compassionate presence. Nursing is the diagnosis and treatment of human responses and advocacy in the care of individuals, families, groups, communities, and populations in recognition of the connection of all humanity.* (ANA (2021). *Nursing: Scope and Standards of Practice, Fourth Edition*, p. 1.)





# PROGRAM MISSION

The mission of the Yavapai College Nursing Program is to provide quality education that will develop competent, caring, holistic and ethical practitioners who value lifelong learning and adapt to continuous changes in the health care system.



# Campus Locations Offered: Prescott and Verde Valley Campuses

LOCATIONS



Prescott Campus:  
Classrooms, Labs



Verde Valley Campus:  
Classrooms, Labs, Simulation Center

## Success Rates and Program Outcomes

*For complete data, please go to the [Nursing website](#).*

### 2023 Performance on Licensure Examination

#### All Students for Entire Program

Yavapai College Pass Rate 87.64%

Arizona Pass Rate 90.39%

National Pass Rate 88.56%

### Program Completion Rate All Students for Entire Program

2023-2024 – 77.6%

### Job Placement Rates All Students for Entire Program

2023-2024 – TBD



## Accreditation Information

The Associate of Applied Science (AAS) nursing program at Yavapai College is accredited by the:

Accreditation Commission for  
Education in Nursing (ACEN)  
3390 Peachtree Road NE, Suite 1400  
Atlanta, Georgia 30326  
(404) 975-5000  
[www.acenursing.org](http://www.acenursing.org)



The RN-BSN program is currently in candidacy status and will be a site visit for initial accreditation in Spring 2025.

Arizona State Board of Nursing  
1740 W Adams Street, Suite 2000  
Phoenix, AZ 85007  
(602) 771-7800  
[www.azbn.gov](http://www.azbn.gov)



**Licensure is done through the Arizona State Board of Nursing, not Yavapai College.**  
Contact the Arizona State Board of Nursing ([www.azbn.gov](http://www.azbn.gov)) if you have ever been convicted of a felony to clarify if you are able to be licensed.

## EMPLOYMENT OUTLOOK

- According to the U.S. Department of Labor (DOL)<sup>1</sup>, Registered Nurses (RNs) will continue to be in demand, and job opportunities are expected to be favorable.
- Employment of registered nurses is projected to grow six percent (6%) from 2022 to 2032, faster than the average for all occupations<sup>1</sup>.
- Students often receive offers for employment from the same health care organizations where they completed their clinical rotations. In Arizona, entry-level salaries range from about \$24.00-\$36.00 per hour or more, depending on the type of practice, benefits, and other considerations. In 2023, the average hourly wage was \$41.38/hour<sup>1</sup>.

<sup>1</sup> Bureau of Labor Statistics, U.S. Department of Labor, Occupational Outlook Handbook, Registered Nurses, at <https://www.bls.gov/ooh/healthcare/registered-nurses.htm> (visited June 17, 2024).

# NURSING PROGRAM ESTIMATED COSTS

## Estimated Cost for the Nursing Program 24-25AY (Based upon Arizona Resident Student Status)

Pre-Requisite & Co-Requisite Tuition cost includes pre-program entry AHS114	\$4454
Program Tuition (AAS)	\$8,589
Textbooks (eBook bundle) +APA and Drug Guide (printed texts and recommended materials for additional cost). OER resources will be used for selected nursing courses.	1st Year \$673 2nd Year \$150
Other required Clinical Items - MyClinicalExchange (Partnered clinical sites software used to track Clinical Requirements) \$20-25 per semester	\$75
Background check, drug screening and Clinical Requirements software -- CastleBranch (YC Nursing software used to track Clinical Requirements)	\$143.50 (cost during entire program)
Uniforms and shoes	Varies by vendor \$300
Physical Exam and Immunizations	Varies by Provider \$350
CPR certification	Varies by Provider \$58
Fingerprinting Fees (AZ DPS)	Subject to change \$74.95
Transportation	Varies by clinical location \$750
Nursing Pin (after Program completion)	Gold Pin \$100      Silver Pin \$70
RN Licensure fees (Due in 4th Semester)	\$525
RN-BSN Tuition costs	\$8,845
LPN-RN Advance Placement Tuition costs	\$3,764
LPN Step-out Tuition costs	\$4,150

## At Yavapai College, we offer many options for tuition payment

### FAFSA –Free Application for Federal Student Aid

- Complete the FAFSA every year at: [www.studentaid.gov](http://www.studentaid.gov)
- Required for grants and loans
- Details about student loans, repayment options, federal and state scholarship search engines at [www.studentaid.gov](http://www.studentaid.gov)

### Scholarships

- Apply early!
- Most scholarships require FAFSA completion

### YC Scholarships

- Apply through the YC portal under Student Support Services or <https://www.yc.edu/v6/financial-aid/>

### Nursing Scholarships

- Community Health Care Scholars Scholarship
- AZ Community Foundation at [www.azfoundation.org](http://www.azfoundation.org)
- Nursing Scholarship program at [www.HRSA.gov](http://www.HRSA.gov)

### YC Workforce Promise Program

- Reimburses tuition when eligible students complete their degree within seven semesters
- See all requirements at: <https://www.yc.edu/v6/promise/workforce.html>



# Nursing Program Types:

Associate Applied Science: Nursing

LPN-RN Advance Placement

LPN Step-Out Option

Bachelor of Science in Nursing (RN-BSN)

Concurrent Enrollment Programs (CEP)

## **Meet with an Academic Advisor Regularly**

- Review any changes to curriculum or admission criteria
- Create your Degree Works individualized educational plan
- Know when it is appropriate for you to take the entrance exam and apply

## **It is your responsibility:**

- To be aware of Nursing Health Requirements and Technical Standards
- To read the Nursing Student Handbook, located on the nursing website
- To know the requirements for the Nursing Application

There will **be random testing for substance use** prior to clinical assignments and “For Cause” Testing

*Please note that applicants should be at least 18 years of age by the time of program start.*

- The Nursing Program is rigorous and involves a **full-time commitment of 40 hours or more per week.**
- Students must maintain a **minimum grade of 78%** in all nursing courses and a minimum of **2.0 GPA** in all General Education courses to remain in the program.
- Students must be prepared to meet the challenge and establish priorities before the start of classes.
- Outside employment: Because the nursing program is demanding, the program encourages students to consider that outside employment may interfere with the quality and success of academic performance. It is recommended that students work fewer than twenty (20) hours per week.



## The Associate of Applied Science Degree in Nursing

- AAS Nursing is a 24-month program (four sequential semesters excluding summers) that prepares students for entry-level positions as registered nurses.
- The program starts twice per year: fall semester and spring semester.
- Prior to program application, the applicant must have a current AZ certification as a CNA or LNA or successfully complete AHS 114, AHS 114C, AHS 114L (6 credits) or an equivalent training course within the last 3 years of the application deadline.
- Students must complete 28 credit hours of pre-requisite and co-requisite courses
- Students must complete 40.5 credits of Nursing Program core courses.
- Applicants are responsible for obtaining the most recent application information guide. *Please review the [Nursing Applicant Information Guide](#) on the [YC Nursing website](#) for complete information.*
- Current requirements and procedures for application may be obtained on the [Nursing website](#).



# ASSOCIATE OF APPLIED SCIENCE DEGREE

## The Associate of Applied Science Degree in Nursing: Courses

Fall Term 1	10 credit hours	Hours
• NSG 140 Nursing Theory I		4
1 <sup>st</sup> 8 weeks		
• NSG 143 Development of Nursing Practice I		2
• NSG 145 Pharmacology for Nursing I		1
2 <sup>nd</sup> 8 weeks		
• NSG 142 Application of Nursing Theory I		2
• NSG 144 Mental Health Nursing Theory I		1
<b>Term hours subtotal:</b>		<b>10</b>

Fall Term 2	10 credit hours	Hours
• NSG 241 Nursing Theory III		5
• NSG 242 Application of Nursing Theory III		3
• NSG 260 Mental Health Nursing Theory II		2
<b>Term hours subtotal:</b>		<b>10</b>

Spring Term 1	15 credit hours	Hours
• NSG 151 Nursing Theory II		3
• NSG 154 Maternal/Child Nursing Theory		2
• NSG 155 Pharmacology for Nursing II		2
• BIO 205 Microbiology		4
<i>General Education Co-Requisite Requirement</i>		
1 <sup>st</sup> 8 weeks		
• NSG 153 Development of Nursing Practice II		2
2 <sup>nd</sup> 8 weeks		
• NSG 152 Application of Nursing Theory II		2
<b>Term hours subtotal:</b>		<b>15</b>

Spring Term 2	9.5 credit hours	Hours
• NSG 270 Nursing Theory IV		3
1 <sup>st</sup> 8 weeks		
• NSG 280 Professional Nursing Concepts		2
2 <sup>nd</sup> 8 weeks		
• NSG 272 Application of Nursing Theory IV		4.5
<b>Term hours subtotal:</b>		<b>9.5</b>

# LPN-RN Advanced Placement AAS Degree

## LPN to RN Advanced Placement

- Candidates have a current, unencumbered license as a Licensed Practical Nurse (LPN) in the state of Arizona.
- Whereas the traditional Associate of Applied Science (AAS) Degree in Nursing is a 24-month program (4 sequential semesters excluding summers), the LPN-RN AP program is 12-months (2 consecutive semesters) and offers an opportunity to enter the AAS program in the 2<sup>nd</sup> year or 3<sup>rd</sup> semester and will prepare students for entry-level positions as registered nurses.
- The program starts twice yearly: in the fall and again in the spring semester. Students must complete 28 credit hours of pre-requisite courses and 19.5 credits of Nursing Program core courses to earn their AAS degree. Credit for prior learning is given for LPN license.
- *Please review the [Nursing Applicant Information Guide](#) on the YC Nursing website for complete information.*

LPN-RN Advanced Placement AAS Degree

# The LPN-RN Advanced Placement Associate of Applied Science Degree in Nursing: Courses

Fall Term 2	10 credit hours	Hours
• NSG 241 Nursing Theory III		5
• NSG 242 Application of Nursing Theory III		3
• NSG 260 Mental Health Nursing Theory II		2
<b>Term hours subtotal:</b>		<b>10</b>

Spring Term 2	9.5 credit hours	Hours
• NSG 270 Nursing Theory IV		3
1 <sup>st</sup> 8 weeks		
• NSG 280 Professional Nursing Concepts		2
2 <sup>nd</sup> 8 weeks		
• NSG 272 Application of Nursing Theory IV		4.5
<b>Term hours subtotal:</b>		<b>9.5</b>

**Graduates of the program (AAS and LPN-RN AP options) are eligible to:**

1. Receive an AAS degree in Nursing
2. Sit for the National Council Licensure Examination for Registered Nurses (NCLEX-RN)
3. Apply for licensure to practice nursing (Registered Nurse)

**- The Arizona State Board of Nursing**

1740 W Adams Street, Suite 2000

Phoenix, AZ 85007

(602) 771-7800

[azbn.gov](http://azbn.gov)

- Licensure is done through the Arizona State Board of Nursing, not Yavapai College

**NOTE:** Contact the **Arizona State Board of Nursing** if you have ever been convicted of a felony to clarify if you are able to be licensed.

As registered nurses (RNs), graduates provide and coordinate patient care and educate patients and the public about various health conditions.



## LPN Step-Out Option

- Students who successfully complete the first year of the AAS program have the option to apply for licensure with the Arizona Board of Nursing as a Practical Nurse (LPN) and be eligible to take the NCLEX-PN after successful completion of LPN190.
- LPN 190 – Practical Nursing Transition is 1.5 credits and is an overview of the role of the practical nurse in the care of patients. The course includes nursing standards and scope of practice of the practical nurse. Focus is on the role of the practical nurse in providing care through interventions consistent with established nursing care plans.
- **Prerequisites:** [NSG 151](#), [NSG 152](#), [NSG 153](#), [NSG 154](#), [NSG 155](#), [BIO 205](#)
- *Interested students should meet with their academic advisors to develop an appropriate academic plan.*
- *Approval must be granted by the director of nursing to ensure the students is in good academic standing.*

## The LPN Step Out Option: Courses

Fall Term 1	10 credit hours	Hours
• NSG 140 Nursing Theory I		4
1 <sup>st</sup> 8 weeks		
• NSG 143 Development of Nursing Practice I		2
• NSG 145 Pharmacology for Nursing I		1
2 <sup>nd</sup> 8 weeks		
• NSG 142 Application of Nursing Theory I		2
• NSG 144 Mental Health Nursing Theory I		1
<b>Term hours subtotal:</b>		<b>10</b>

Spring Term 1	15 credit hours	Hours
• NSG 151 Nursing Theory II		3
• NSG 154 Maternal/Child Nursing Theory		2
• NSG 155 Pharmacology for Nursing II		2
• BIO 205 Microbiology		4
<small>General Education Co-Requisite Requirement</small>		
1 <sup>st</sup> 8 weeks		
• NSG 153 Development of Nursing Practice II		2
2 <sup>nd</sup> 8 weeks		
• NSG 152 Application of Nursing Theory II		2
<b>Term hours subtotal:</b>		<b>15</b>

## Bachelor of Science in Nursing RN-BSN

- Candidates have a current, unencumbered license as a Registered Nurse (RN) in the state of Arizona and have successfully completed an associate degree nursing program at a regionally accredited institution validated by transcript(s).
- The Bachelor of Science in Nursing (RN-BSN) degree prepares nurse leaders by building on prior knowledge and experience to address the healthcare needs of the community.
- The RN-BSN program can be completed in 12-month program (three sequential semesters including summers) for full-time students. All RN-BSN courses are 100% online.
- The RN-BSN degree requires completion of a minimum of 120 credits.
- The program starts three times per year: fall, spring, and summer semesters.
- *For more information, please visit [www.yc.edu/bsn](http://www.yc.edu/bsn).*



# The RN-BSN Program: Courses

Fall Term 1		15 credit hours	Hours
Full Semester			
•	MAT 167 – Elementary Statistics <b>OR</b> PSY/SOC 230 – Introduction to Statistics in the Social and Behavioral Sciences		3
1 <sup>st</sup> 8 weeks			
•	MGT 233 - Business Communication <small>Recommended Program Elective</small>		3
•	Program Elective		3
2 <sup>nd</sup> 8 weeks			
•	LDR 202 - Strategic Leadership <small>Recommended Program Elective</small>		3
•	Program Elective		3
<b>Term hours subtotal:</b>			<b>15</b>

Summer Term 1		6 credit hours	Hours
•	NSG 350 - Nursing Research and Evidence Translation		3
•	NSG 410 - Issues in Professional Practice		3
<b>Term hours subtotal:</b>			<b>6</b>

Spring Term 1		16.5 credit hours	Hours
1 <sup>st</sup> 8 weeks			
•	LDR 201 - Leadership Essentials <small>Recommended Program Elective</small>		3
•	NSG 310 - Transition and Concepts of Professional Nursing		3
•	NSG 320 - Nursing Practice in a Multicultural Society		3
2 <sup>nd</sup> 8 weeks			
•	LDR 203 - Organizational Leadership <small>Recommended Program Elective</small>		3
•	NSG 330 - Advanced Assessment and Health Promotion		3
•	NSG 340 - Nursing Informatics		1.5
<b>Term hours subtotal:</b>			<b>16.5</b>

Fall Term 2		14 credit hours	Hours
1 <sup>st</sup> 8 weeks			
•	NSG 420 - Population-Based Nursing in the Community		4
•	NSG 430 - Aging and End of Life		3
2 <sup>nd</sup> 8 weeks			
•	NSG 440 - Global Health: Ethics and Human Rights		3
•	NSG 450 - Nursing Leadership		4
<b>Term hours subtotal:</b>			<b>14</b>

## What is meant by Concurrent Enrollment Program (CEP)?

- Students in the YC AAS Nursing Program take coursework from a university that is partnered with Yavapai College to simultaneously pursue an Associate Degree in Nursing (ADN) and a Bachelor of Science in Nursing (BSN).
- Currently our partnerships include Arizona State University (ASU), Grand Canyon University (GCU), Northern Arizona University (NAU), and University of Phoenix (UOPX).


## How are students selected for participation in the CEP?

- Students must complete an application to the YC Nursing Program and must have completed the pre-requisite and co-requisite courses for YC and the requirements for the partnering university to be considered for admission to the CEP program.



# ASU Concurrent Enrollment Program (CEP)

**Deana Castellanos**

 (602) 496-0937

 [asu.cep@asu.edu](mailto:asu.cep@asu.edu)

Zoom and phone appointments available.

Send unofficial transcripts for eligibility review!

- Complete BSN coursework online with ASU while simultaneously completing your AAS Nursing degree with Yavapai College.
- Opportunity to earn both degrees in the exact same semester.
- Flexible plan of study; students can take breaks from the ASU coursework, if needed, in consultation with ASU academic advisor.
- ASU courses are taught 100% online.
- Reduced tuition rate is available. Current tuition rates can be viewed at [students.asu.edu/tuition](https://students.asu.edu/tuition).
- Review the [Yavapai-ASU CEP Handbook](#) for additional details, including sample plans of study.

**To be eligible to join the ASU CEP, students must meet the following criteria:**

- ✓ Be admitted to or enrolled in the YC associate degree nursing program.
- ✓ Earn a minimum 3.0 ASU prerequisite GPA, which is calculated using the following courses:
  - ✓ ENG 101 First Year Composition I
  - ✓ ENG 102 First Year Composition II
  - ✓ MAT 141 College Mathematics or higher
    - Mathematics course must fulfill ASU's MA or MATH general studies requirement.

**Additional online postlicensure options:**

RN to BSN [links.asu.edu/rnbsn](https://links.asu.edu/rnbsn)

RN to MS bridge (bachelor's degree not required) [links.asu.edu/rn-ms](https://links.asu.edu/rn-ms) | [links.asu.edu/rn-ms-ned](https://links.asu.edu/rn-ms-ned)



# CONCURRENT ENROLLMENT AT NAU

Pursue your associate degree while completing a bachelor's degree in Nursing with NAU.

NAU partners with community colleges across Arizona to offer flexible pathways for students statewide.

With our CEP program, you will complete your BSN at the same time as your RN, without having to be licensed first.

If you start your program and then decide to pursue your BSN, we have a Mid-AAS program you can start at any time.

NAU will transfer 90 credits from your community college, leaving just 30 credits to complete with NAU.

This program is accredited by the Commission on Collegiate Nursing Education.

[online.nursing@nau.edu](mailto:online.nursing@nau.edu)  
[nau.edu/cep](http://nau.edu/cep)  
928-523-2671



**NAU** NORTHERN  
ARIZONA  
UNIVERSITY

College of Nursing

# GCU NCEP Program

## Program Facts

- **Start your BSN sooner:** GCU requires no prerequisite courses for BSN.
- **Focus on your RN coursework:** Most GCU classes are only five weeks long and are completed online.<sup>1</sup> Clinical, practicum and immersion hours completed locally.
- **Get specialized support:** GCU has a representative specializing in this program specifically for YC students.
- **Mid-Point entry opportunity:** Start courses after semester two before semester three.
- **Scholarship opportunity:** GCU CEP students get a discount on all concurrent courses

## YC/GCU representative

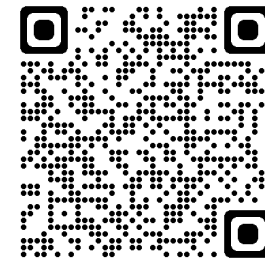
**Caylie Sandillo**

**602-359-9119**

**[Caylie.Sandillo@gcu.edu](mailto:Caylie.Sandillo@gcu.edu)**

**To book an appointment:**

**<https://calendly.com/caylie-sandillo>**





# Earn your ADN and BSN in as little as 3 years

Our Concurrent Enrollment Program (CEP) was built for community college students like you.



## It's fast

To earn a BSN, community college nursing students normally have to transfer to a four-year university, where credits are evaluated individually. With us, you'll transfer **87** credits for earning your ADN.

Contact our dedicated CEP staff to learn more

**Kaeli Dutrow**

[kaeli.dutrow@phoenix.edu](mailto:kaeli.dutrow@phoenix.edu)

559.577.4644 (call/text)

[phoenix.edu/transferpathways](http://phoenix.edu/transferpathways)



## It's affordable

In addition to your transferred credits, you'll need just **33 credits** to complete your BSN. That means you'll pay only for the classes you need – not repeats or general courses. Plus, we've lowered tuition to \$350 per creditor for students.

\$350 per credit unit Tuition: 33 BSN Core Units at \$350 per unit = \$11,550.00  
5 + 1 Tuition Benefit: \$11,550.00 - \$1,050.00 = \$10,500.00  
E-books: \$170 per course x 11 courses = \$1,870.00  
Estimated Program cost = \$12,370.00



## MSN/Bridge

Take three upper-level courses and then choose the master's path that best suits your needs. Designed for RNs that have a bachelor's degree in an unrelated field, this program helps working nurses more quickly earn their MSN - in turn, saving time and money - and preparing you for new opportunities in your future.

**RN-BSN**  
**87 credit BLOCK**  
**TRANSFER \$350 per credit**

The Bachelor of Science in Nursing and the Master of Science in Nursing programs at the University of Phoenix are accredited by the Commission on Collegiate Nursing Education, 655 K Street, NW, Suite 750, Washington, DC 20001, 202-887-6791.

These degree programs include clinical courses or a practicum, which may not be completed in certain states. Please check with a University enrollment representative. While widely available, not all programs are available in all locations or in both online and on-campus formats. Please check with a University enrollment representative. The University's Central Administration is located at 4025 S. Riverpoint Parkway, Phoenix, AZ 85040.



# Before Applying to the Nursing Program

Complete program pre-requisites and co-requisites



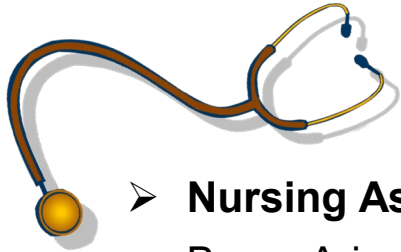
## Before Applying:

***Important: Students must apply to and be admitted to Yavapai College prior to applying to the Nursing program. Please go to [www.yc.edu](http://www.yc.edu) and click on Admissions > Getting Started at the top-left of the page to learn about the college admission procedure.***

Prior to program application, the following must be completed:

- ❖ *Review the Nursing Applicant Information Guide*
- ❖ *Complete Nursing Information Session and print out certificate of completion*
- ❖ *Prepare for pre-admission testing and schedule a test date*
- ❖ *Meet with an Advisor to complete a pre-entry check sheet form*
- ❖ *Be prepared to submit transcripts from YC and other schools where you completed the prerequisite courses*
- ❖ *Get an Arizona Level 1 fingerprint clearance card.*
- ❖ *For LPN-RN AP students: complete a pharmacology refresher course within the past 12 months and complete a dosage calculation exam (schedule with the testing center).*

# The Associate of Applied Science Degree in Nursing: Prerequisites



Prior to program application, the following must be completed:

➤ **Nursing Assistant Training or Certification**

- Be an Arizona State Certified Nursing Assistant with **current** certification/license **in good standing**,

**OR**

- AHS114, AHS 144C, and AHS 114L (6 credits) at YC (or equivalent) within the last 3 years of the application deadline

An application is required for AHS 114, visit [www.yc.edu/alliedhealth](http://www.yc.edu/alliedhealth) to find the application information.

A list of qualifying programs can be found on the AZBN website (<https://www.azbn.gov/education/nursing-programs-lists>).

Applicants who have successfully completed equivalent training courses from other states will need to show documented proof of the number of hours of training completed.

# PRE and CO-REQUIIISTE REQUIREMENTS

	Pre-program entry requirement	Pre-Requisites	Credits
	Current Arizona certification as a CNA, LNA <b>OR</b> AHS 114   AHS 114C   AHS 114 L or equivalent within the last three years of the application deadline.		<b>6</b>
<b>Fall Term 1</b> <i>10 credit hours</i>			
ENG 101	College Composition I (or ENG 101A or ENG 103)	ENG 095/100 <b>OR</b> placement	3
MAT 141	College Math (or MAT 142)	MAT 092 <b>OR</b> placement	3
BIO 156 BIO 181	Human Biology for Allied Health <b>OR</b> General Biology I	Reading proficiency	4
<b>Spring Term 1</b> <i>14 credit hours</i>			
ENG 102	College Composition II (or ENG 104)	ENG 101 <b>OR</b> consent	3
PSY 101	Introduction to Psychology <b>OR</b>	None	
PHI 204	Medical Ethics	ENG101 or ENG103	3
BIO 201	Human Anatomy & Physiology I	BIO156 <b>OR</b> BIO181	4
BIO 205	Microbiology (recommended to take this course prior to admission)	BIO100 or BIO156 or BIO181	4
<b>Summer Term 2</b> <i>4-7 credit hours</i>			
BIO 202	Human Anatomy & Physiology II	BIO 201	4
MAT 167	Elementary Statistics (required for RN-BSN program)	MAT 141, MAT 142, MAT 152	3
<b>Total Pre-Requisite Credits</b>			<b>34-37</b>

- For more information and details, the [pre-entry progression plan](#) can be found on the YC website [www.yc.edu/nursing](http://www.yc.edu/nursing).
- All Math and Science courses must be taken within the past 10 years of starting the program.

# NURSING PROGRAM TESTING INFORMATION

## AAS Pre-Admission testing:

- Testing must be completed at YC; test scores from other schools are not acceptable
- Sign up through the YC testing center for a test date to complete your pre-admission testing
- Students may take the **test only once during each application cycle**
- Test scores are good for two consecutive application cycles (students may use the current test score that is the highest)
  
- Pre-admission testing is offered once a semester (beginning of Fall and Spring) – check the website for dates
- Registration is through the YC Testing Services website ([www.yc.edu/testing](http://www.yc.edu/testing))
- Exam scores must be submitted with nursing application

**Traditional AAS applicants: ATI Test of Essential Academic Skills (TEAS) Exam**

**LPN-RN AP applicants (only): NLN Nursing Acceleration Challenge Exam (NACE)  
Foundations of Nursing (FON) v1.2**

## ATI TEAS Test Information

- 170 questions total
- Test length is 209 minutes

### Sections are timed, and you will be tested on:

- Reading: 45 questions in 55 minutes
- Math: 38 questions in 57 minutes
- Science: 50 questions in 60 minutes
- English and Language Usage: 37 questions in 37 minutes



Students must set up an ATI TEAS account prior to their test date. The ATI TEAS username and password are required for the exam. Must use your YC scholar email for the ATI account setup. Go to [www.atitesting.com](http://www.atitesting.com) to create an account.



# NLN NACE FON v1.2 TEST INFORMATION

## NLN NACE FON v1.2 Test Information

- 100 questions total
- Test length is 150 minutes

### You will be tested on:

- Assessment: 24 questions
- Evaluation: 23 questions
- Implementation: 29 questions
- Planning: 24 questions



Students must set up an NLN account prior to their test date. The NLN username and password are required for the exam. Must use your YC scholar email for the NLN account setup. Go to [www.nlnintest.org](http://www.nlnintest.org) to register/pay for the NLN NACE FON v1.2 exam.



# Applying to the Nursing Program at YC:

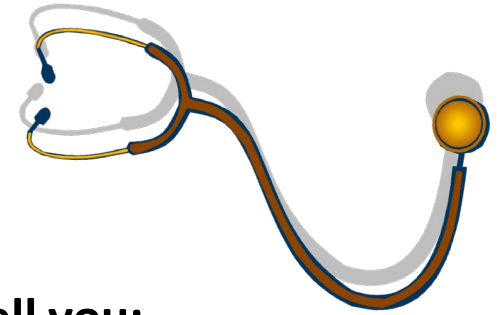
What steps do I take?

## Admission into the Nursing Program

- Enrollment is limited and highly competitive
- Students **MUST** meet the minimum requirements of the program and those of Yavapai College
- Applicants are responsible for obtaining the most recent **Application Information Guide**. Current requirements and procedures for application may be obtained online at the Nursing website: [www.yc.edu/nursing](http://www.yc.edu/nursing).

## Nursing Application:

- Available online <http://www.yc.edu/nursing>  
Application deadlines are posted on the website.
- READ THE NURSING APPLICATION INFORMATION GUIDE – it will tell you:
  - Steps to apply for admission
  - Additional admission requirements *after* conditional acceptance
  - Notification of acceptance
- Applications must be submitted electronically through Dynamic Forms (YC login required)
- All required documentation must be submitted with the application by the due date deadline. (All required documents must be uploaded to the Dynamic Form Application prior to submission. Any incomplete sections or missing documents will result in an incomplete application. Any incomplete application will not be reviewed or scored).



## The following must be completed and included with your application:

- ❖ Students **MUST** complete this Self-Paced Information Session and the Information Session Verification Questionnaire within 12 months of application
- ❖ **Pre-Admission Test Results:**
  - AAS applicants: TEAS entrance exam** with a minimum score of 58.7%
  - LPN-RN AP applicants: NLN NACE FON v1.2 exam** with a minimum score of 68%
- ❖ Completed Advisor Pre-Entry Check Sheet Form for the Nursing Program signed and dated by Advisor and Applicant.
- ❖ Submit unofficial YC transcripts and from every college attended. (Official transcripts must be mailed to the registrar's office)
- ❖ **AAS applicants:** Copy of CNA certificate or LNA license or proof of completion of AHS 114
- ❖ **LPN-RN AP applicants:** Submit copy of Nursys Quick Confirm License Verification Report
- ❖ Students will be required to provide proof of residency (tuition residency is defined by the Arizona State Legislature and is outlined in the Yavapai College catalog).
- ❖ AZ Department of Public Safety Level 1 Fingerprint Clearance Card (must be valid for the duration of the program)  
<https://www.azdps.gov/services/public/fingerprint>
- ❖ **LPN-RN AP applicants:** Certificate of completion of a pharmacology refresher course, proof of completion of IV certification, dosage calculation exam score.



# SELECTION CRITERIA POINT SYSTEM

Admission to the program is based on a 1000-point system. Proof of coursework and registration history at Yavapai College will be established by the records on file in the Registrar's office. ***Final selection and placement will be determined by the Program Admissions Committee.***

**Points are calculated by a formula related to:**

- Current Overall GPA
- ATI TEAS/NLN NACE FON v1.2 pre-entrance exam
- Residency
- Total General Education Credits Complete
- General Education Credits earned at Yavapai College

Achieving a high level of success in the pre-entry and co-requisite courses will improve a student's chance for admission to the program. As will a high score on the ATI TEAS or NLN NACE FON v1.2.

Category	Ranking Criteria	Criteria Points Values	Possible Points
1	Overall GPA – 2.0 or higher to apply	GPA of pre and co-req. credits completed 2.0 or greater = ____ x 50 Example: 2.0 x 50 = 100 points	200
2	ATI TEAS Pre-Entrance Cumulative Score 58.7% minimum is required for application submission	84.8-100% = 500 points 78.0-84.7% = 450 points 72.8-77.9% = 400 points 65.4-72.7% = 350 points 58.7-65.3% = 300 points  Example: Cumulative Score of 60% = 300 points	500
		NLN NACE FON v1.2 score $\geq$ 68% = 400 points score < 67.9% = 0 points Dosage calc $\geq$ 95% = 100 pts. Dosage calc < 95% = 0 pts	
3	Total General Education Credits Completed	28 pre and co-req credits = 100 points 3.5 points per credit hour completed- 2 additional points for all 28 credits complete at time of application	100
4	*Residency	Yavapai County = 100 points State of Arizona = 50 points *Min. 1 yr. at time of application submission	100
5	Current Yavapai College Student	Completed pre-program entry and program general education credits at Yavapai College 12 or more credits = 100 points 9-11 credits = 80 points 6-8 credits = 60 points 3-5 credits = 40 points	100

## Applicants selecting Prescott Campus placement:

- The 40 highest-ranked applicants will be offered Prescott Campus seats based on space availability.
- There may be opportunities for an evening cohort pending enough interest.
- The next 7 applicants on the ranking will be offered alternate status.

## Applicants selecting Verde Campus preference:

- The 22 highest-ranked applicants will be offered Verde Campus seats.
- The next 4 applicants will be offered alternate status.

**Once a campus has been assigned to and accepted by a student, it should be assumed that there will be no transfer offered.**

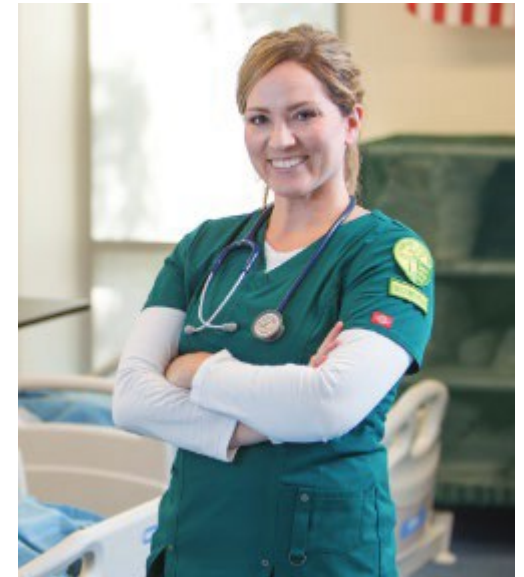


All qualified applicants not offered a seat to their preferred campus through the ranking process will be considered if seats are still available at the other campus.

# NOTIFICATION OF CONDITIONAL ACCEPTANCE

## After submitting your application:

- ❖ All qualified applicants will receive notification of **Conditional Acceptance** within 30 days of the application deadline.
- ❖ Applicants who are not selected will receive a letter of regret.
- ❖ Any qualified applicant, in excess of the number of seats available, will receive notification of **Alternate Status**.
- ❑ Alternates may be accepted if an accepted applicant declines placement, does not successfully complete all required prerequisites, or does not submit the required documentation in a timely fashion.
- ❑ We do not maintain a waitlist. Applicants not selected must reapply for the next application cycle.



# CONDITIONAL ACCEPTANCE

## Acceptance and Conditional Acceptance Packet

Upon receiving the **Conditional Acceptance Packet**, the applicant will be required to set up their CastleBranch account (YC Nursing software that collects and monitors all Nursing Program Health Requirements while in the Nursing program):

- Criminal Background review
- Random Drug Screening – zero tolerance to include marijuana
- Immunization Tracker: MMR, Varicella, TDAP, Hep B, (or proof of titers), Flu, Covid-19, tuberculosis screening - [immunization-requirements.pdf \(yc.edu\)](https://yc.edu/immunization-requirements.pdf)
- American Heart Association BLS | CPR (Basic Life Support | Cardiopulmonary Resuscitation)
- Driver's License
- Physical - use the Health Care Provider Signature Form
- Medical Insurance – must be maintained throughout the program
- Three release forms



## Nursing Student Handbook:

Recommended to review after receiving the **Conditional Acceptance Letter**.

### **Key Policies in the Student Handbook:**

- Attendance Policy
- Testing and Remediation Policy
- Grading
- Study Time
- Coordinating School with Other Obligations
- Progression in the Nursing Program
- Civility
- Professional Behavior and Appearance
- Delays and Closures Information/alert YC
- Campus Placement
- Appeal Policy



To find the Nursing Student Handbook, [www.yc.edu/nursing](http://www.yc.edu/nursing)





## Thank you for Viewing the Pre-Nursing Workshop

- Click on the class verification link on the YC.edu/nursing page and answer all the questions. This will generate a certificate of completion that will be sent to your email.
- Please make sure to include your name, YC email and phone #.
- You must include the certificate of completion with your Nursing program application.